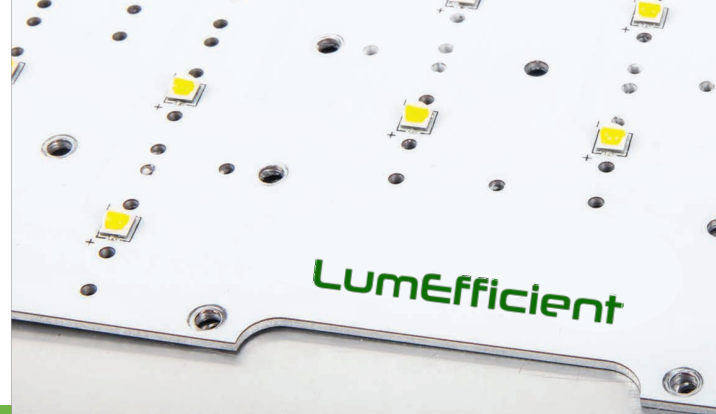


LumEfficient

Applying advances in LED technology to industrial facilities, transport & logistics and hazardous locations, LumEfficient's products and solutions combine the latest innovation in energy efficiency and reliability from LED lighting with industrial strength design principles to bring you the ultimate in 'Tough Light.' Our products are designed for high stress, mission critical environments, where safety and productivity are just as important as reducing energy and maintenance costs.



Light Industrial

- Superior thermal design
- Compact and bright
- Made with style in mind
- Long hours
- Lightweight
- Multifaceted



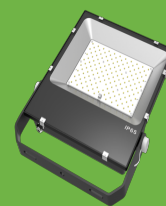
GC202
OpenLux High Bay

This second generation GC series still employs the circular design offering vertical illumination. Exterior and interior venting around the lens keep the LED's cooler.



GC203
Crossover High Bay

Durable and stylish, the versatile Crossover is perfect for industrial and architectural applications. An optional NSF-rated version is also available.



FLE
Flood Light

Rugged and solid construction allows the FLE to withstand corrosion in multiple environments.

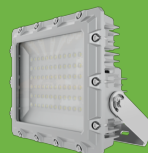
Heavy Industrial

- Fire and explosion hazard elimination
- Corrosive and rugged environments
- High level of illumination
- Safe vertical and horizontal
- 24/7 operation without downtime



HBL1000
High Bay

The HBL uses high power discrete LEDs to ensure the highest efficiency and output for industrial high bays.



FZ1
Flood Light

Designed for harsh environments the FZ1 is a UL-rated C1D1 fixture and is considered explosion proof.



FZE0250
Flood Light

A flood light designed specifically for C1D2 hazardous locations with high-efficiency discrete LEDs.



HZE0250
High Bay

With a robust die-cast housing, the HZE is ideal in industrial environments requiring a C1D2 rating.



GC302
High Bay

With its optimal design to withstand temperature up to 65°C, the new GC302 offers excellent performance and longer lifespan.



LZE
Linear Light

Designed to replace fluorescent fixtures in hazardous locations such as oil and gas facilities, pulp and paper mills, and chemical processing plants.