

RESILIENT TOUGH LIGHT

A LUMA BRAND

FL0400 SERIES

OUTDOOR LIGHTING

FEATURING LIGHT EMITTING DIODE (LED)



Benefits

- 100 lumens per watt
- Suitable for wet locations, IP65
- Rugged construction for high vibration
- 7-year warranty

Application Areas

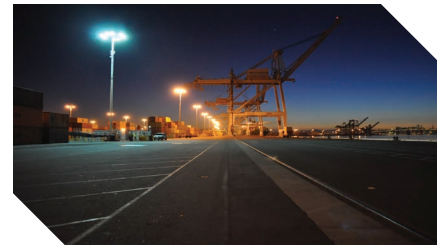
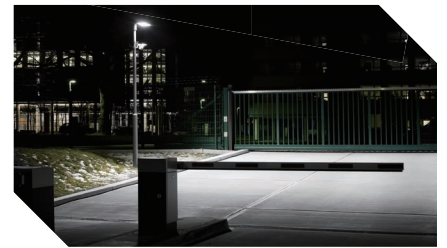
- Pole/ Arm-Mounted Area and Roadway
- Wall-Mounted Area
- Parking Garage

Compliance

- Designed for UL1598A for marine grade environments
UL1598A pending
- 3G bridge and overpass vibration standards (per ANSI
C136.31 – 2001 pending)
- 6kV surge suppression in accordance to IEEE/ANSI
C62.41.2
- LM80 data available upon request



IP65



OUR SERVICES

Site Evaluation

Application Consulting

Installation Support

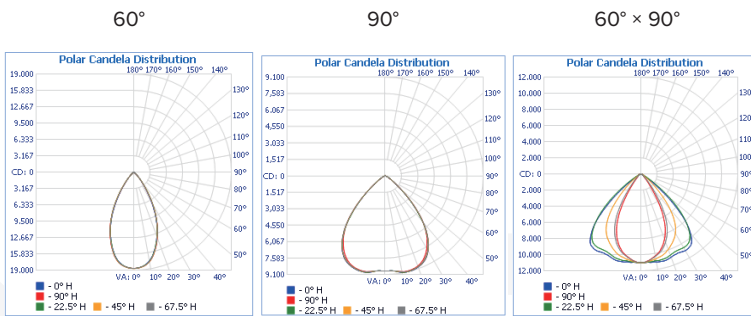
FLL0400 SERIES

OUTDOOR LIGHTING

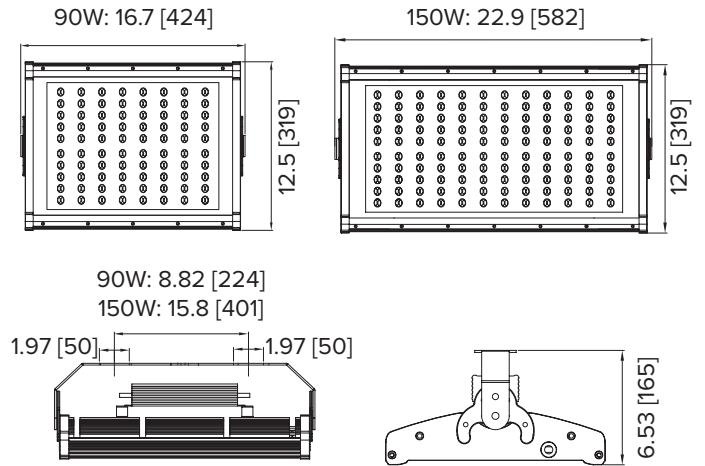
FEATURES

Input Voltage	120 - 277V
Power Factor	≥ 0.98
Total Harmonic Distortion (THD)	< 20%
Surge Protection	6kV suppression (IEEE/ ANSI C62.41.2)
Operating Temperature	-40°C to +55°C
Mounting	Bracket
Housing	Extruded aluminum
Finish	Polyester powder coating

OPTICS

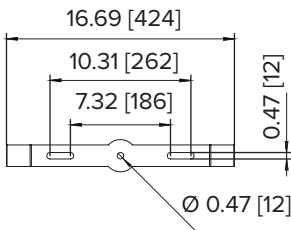


DIMENSIONS (inches [mm])

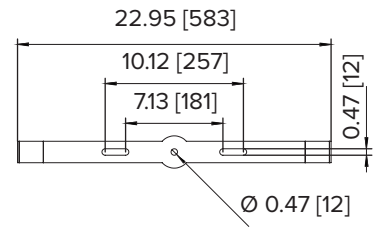


Mounting Options

90W BRACKET MOUNTING DRAWING



150W BRACKET MOUNTING DRAWING



SPECIFICATIONS

	90W	150W
Initial Lumens	9,000	15,000
Lumens Per Watt	100	100
Lumen Maintenance (L70)	100,000	100,000
CRI	≥ 70	≥ 70
CCT (K)	4000K - 5700K	4000K - 5700K
Weight	22lb (10kg)	27.3lb (12.4kg)

ORDERING OPTIONS

Sample Order Code: **FLL0400-90-4-90-V1-0-Y**

Family	Wattage	Color Temperature	Beam Angle	Voltage	Control	Mounting
FLL0400	(90) 90W	(4) 4,000K	(60) 60°	(V1) 120-277V	(0) None	(Y) Bracket
	(A5) 150W	(5) 5,000K (6) 5,700K	(90) 90° × 60° (91) 90°			